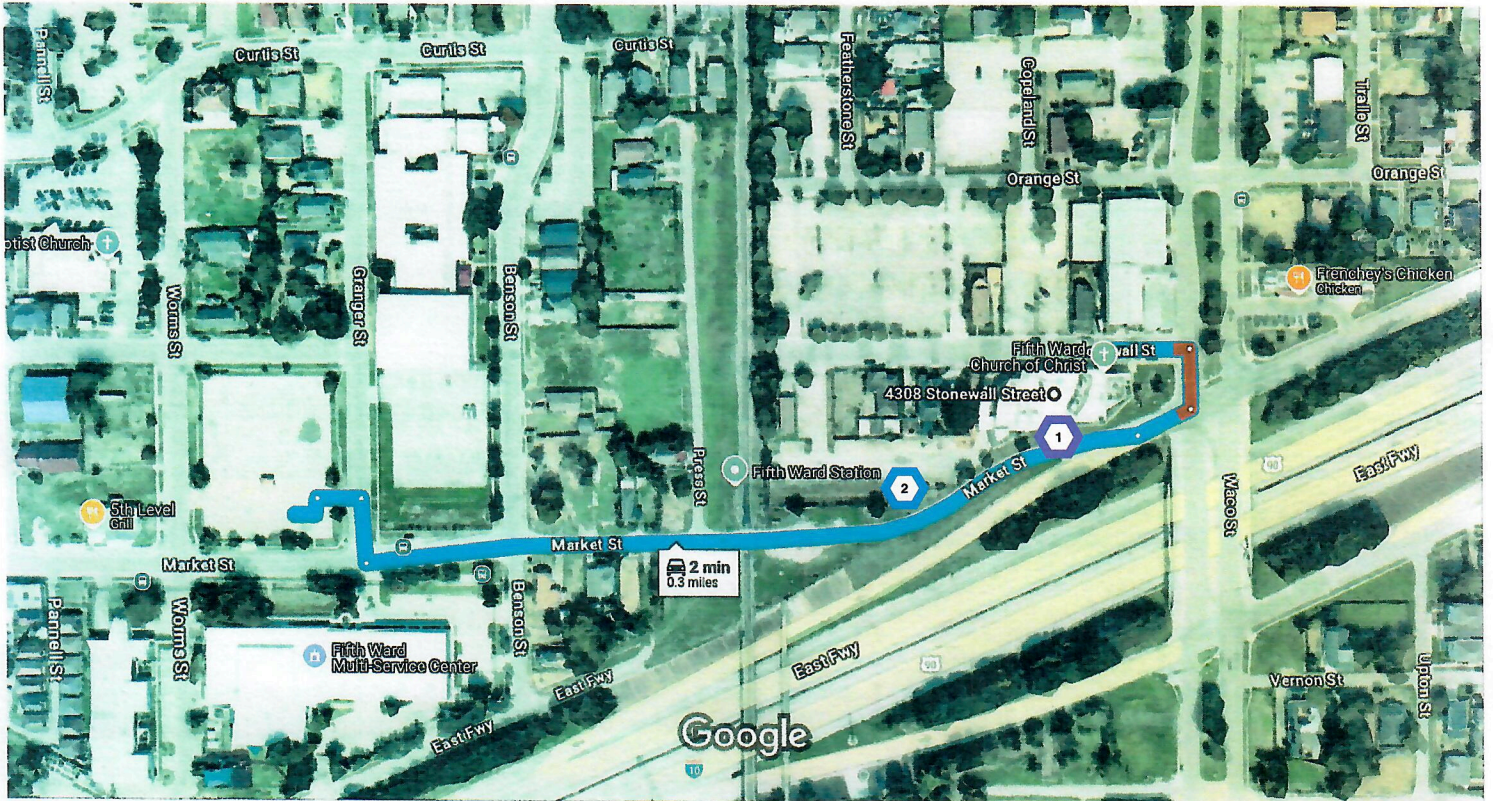


## Attention ALL Members



### Parking Directions during the Building Expansion

*Directions to the*

### **Fifth Ward Multi-Service Center Parking Lot 4014 Market St., Houston, TX 77020**

#### **Arrival Instructions**

Please arrive early enough to drop your families off at the church building between 8:00 & 9:00 AM.

#### **Parking Instructions**

After dropping off your families, proceed to the off-site parking lot to the Fifth Ward Multi-Service Center and park your vehicle. Vans will be available to transport everyone to and from the FWCOOC and the FW Multi-Service Center before and after worship service and after Bible Class.

#### **Drop Off & Pick Up**

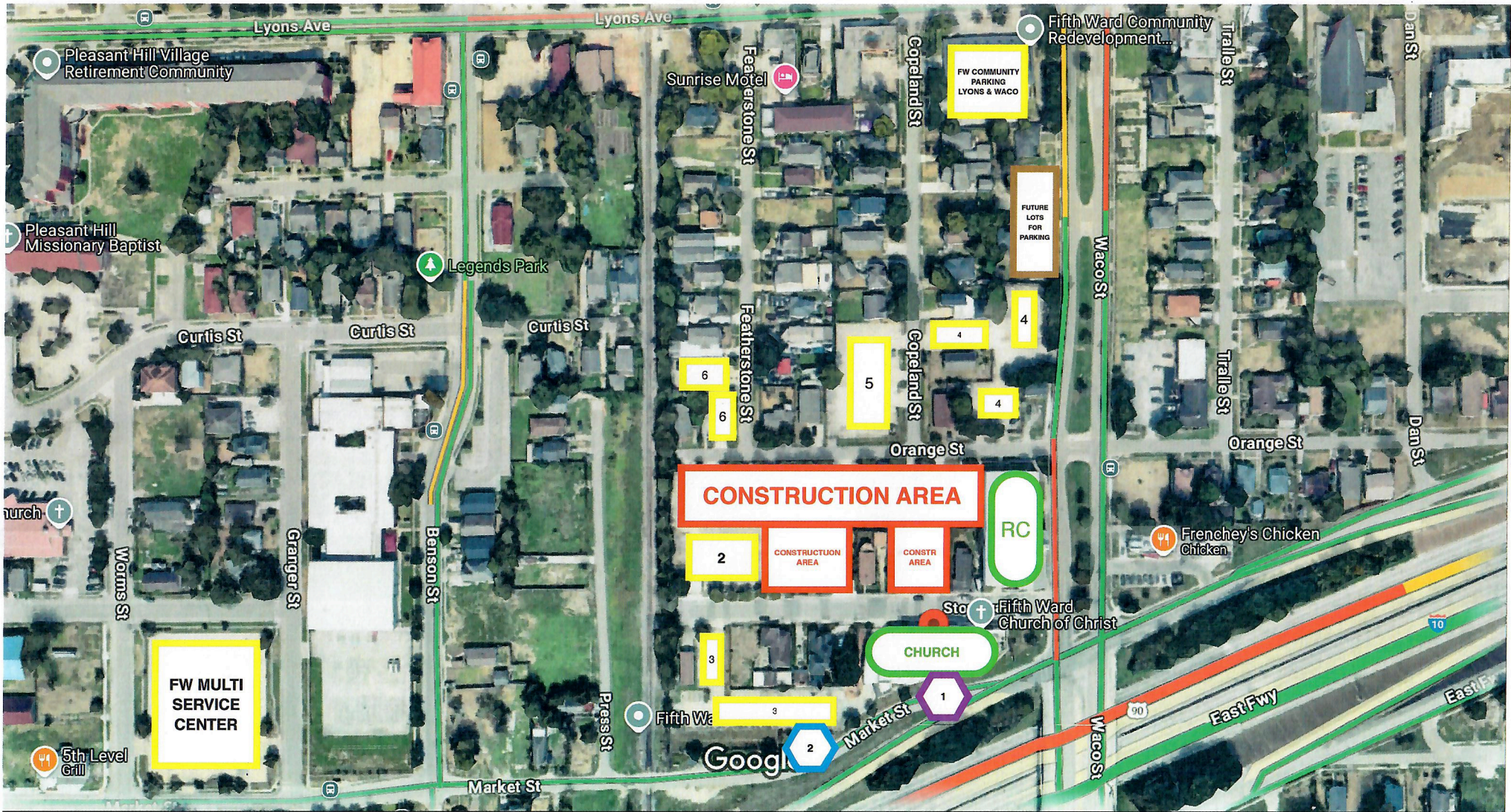
All members who use the off-site parking lot at the FW Multi-Service Center will be picked up and then dropped off at Drop Off locations 1 & 2. You can find these locations on this map and the parking map. Transportation will be provided to these members back to the FW Multi-Service Center to pick up their vehicles after worship service and bible class. Pick up locations will be at both Drop Off locations 1 & 2.

#### **Route Instructions**

- Travel west on the I-10 service road from FWCOOC.
- Do not get on the freeway. Stay to your right.
- Cross the railroad tracks.
- After you have passed Benson St., turn right onto Granger St. and the parking lot will be on the left.

**THANK YOU FOR YOUR COOPERATION IN ENSURING A SMOOTH AND TIMELY PARKING PROCESS**

# MAP FOR PARKING & DROP OFF LOCATIONS

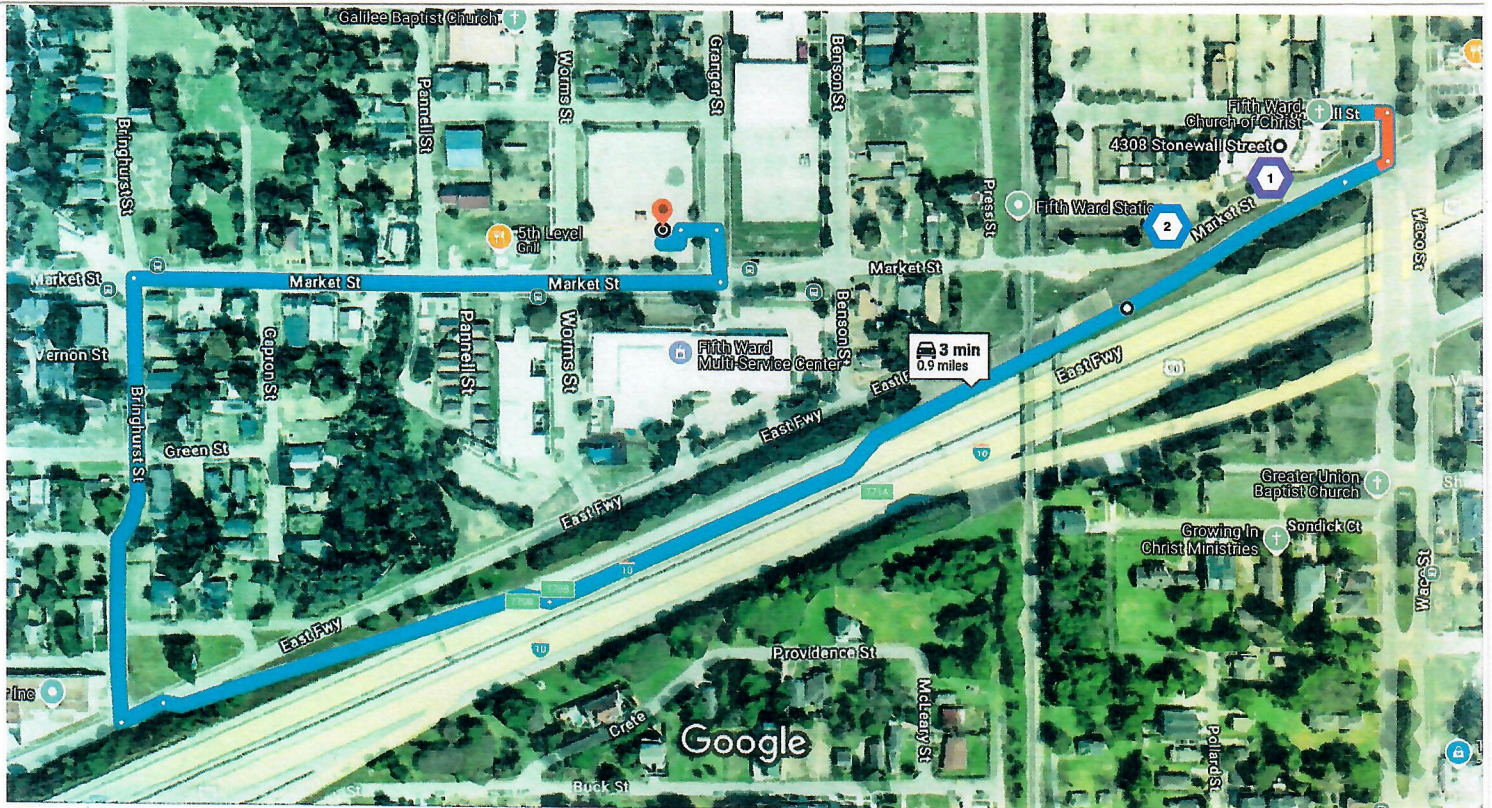


LEGEND: **Yellow** = Available Lots for Parking  
**Green** = Church Building & Resource Center  
**Purple** = Drop off Location #1

**Red** = Construction Areas  
**Brown** = Future Lots for Parking  
**Blue** = Drop off Location #2

## Attention ALL Members

**\*USE THIS ROUTE IF A TRAIN IS ON THE TRACK\***



### Parking Directions during the Building Expansion

Directions to the

## **Fifth Ward Multi-Service Center Parking Lot 4014 Market St., Houston, TX 77020**

### Arrival Instructions

Please arrive early enough to drop your families off at the church building between 8:00 & 9:00 AM.

### Parking Instructions

After dropping off your families, proceed to the Fifth Ward Multi-Service Center and park your vehicle. Vans will be available to transport everyone to and from the FWCOG and the FW Multi-Service Center before and after worship service and after bible class.

### Drop Off & Pick Up

All members who use the off-site parking lot at the FW Multi-Service Center will be picked up and then dropped off at Drop Off locations 1 & 2. You can find these locations on this map and the parking map. Transportation will be provided to these members back to the FW Multi-Service Center to pick up their vehicles after worship service and bible class. Pick up locations will be at both Drop Off locations 1 & 2.

### Route Instructions

This route avoids the railroad tracks if there is a train.

- Travel west on I-10 from FWCOG.
- Take exit 770-B toward Gregg St. and Meadow St.
- Turn right onto Bringhurst St (Radiator Shop on the corner)
- At the stop sign, turn right onto Market St.
- The FWMS Center will be on your right and the parking lot across the street on your left.

**THANK YOU FOR YOUR COOPERATION IN ENSURING A SMOOTH AND TIMELY PARKING PROCESS**